

BIG TRAIN SUMMER BASEBALL CAMPS 2009



◆ Ages 5-13 ◆ All Skill Levels Welcome
Every Child Deserves a Great Summer

CALL 301-983-1006 FOR MORE INFO



OR PRINT THE FORM BELOW

Meeting the diverse needs of players and parents.

Big Train Camp for players 5 to 13 years old...

- Big Train Summer Camp for players 5-13

Advanced skill development...

- Big Train Advanced Development Camp on Field #2 for ages 9-12

NEW! Pitching Camp with MLB Scout Bill Sizemore...

- Special two-week pitching camp for players ages 10+
- Led by Big Train pitching coach and MLB Scout, Bill Sizemore

Camp Registration

Early Bird Registration Discount of 10% Through March 1, 2009

May not be applied to group rate fee

Name	Nickname	Date of Birth
Address	City/State/Zip	School
Home Phone #	Email – Mom	Email – Dad
Names of Parents or guardians	Cell Phone – Mom	Cell Phone – Dad
Emergency Contact	Emergency Phone #	Emergency Phone #

Allergy Information / Health Concerns

- Big Train Baseball Camp \$225 x _____ = \$ _____
circle week(s): 6/22-26 6/29-7/3 7/6-10 7/13-17 7/20-24 7/27-31
- Big Train Advanced Development Camp \$175 x _____ = \$ _____
circle week(s): 6/22-26 6/29-7/3 7/20-24 Add \$80 for Afternoon Camp \$80 x _____ = \$ _____
- NEW! Big Train Pitching Camp with MLB Scout Bill Sizemore . \$300 x _____ = \$ _____
circle session(s):6/22-7/3 7/13-24
- 2008 Big Train Family Season Pass \$62.50 x _____ = \$ _____
- Extended Day Option (7:30-9 a.m. & 3-5:15 p.m.) \$50/wk x _____ = \$ _____
- \$25/week for a.m. or p.m. only or before half-day camps.....\$25/wk x _____ = \$ _____

Total Payment: \$ _____

Circle one: CHECK VISA MC

Card # (Please print legibly)

Exp. Date V-Code (3 digits on back of card)

Signature

Medical Consent Form: I verify that my child is in normal health and has my permission to participate in Big Train Summer Camps. I authorize camp staff to act for me in securing medical treatment for my child in the event of injury or sickness. A registration requires that a parent or guardian sign below to agree that in case of an accident involving their child while attending a Big Train Summer Camp, they release Bethesda Community Base Ball Club/Big Train and staff from any and all liability.

Signature of Parent or Guardian

Date

REFUND POLICY

A full refund will be given minus \$25 for an administrative fee to people who cancel their camp registration 30 days or more before the start of the camp. No refund will be given for cancellations less than thirty days before the start of the camp.

PRINT THIS PAGE, FILL OUT FORM & MAIL TO: Bethesda Community Base Ball Club, P.O. Box 30306, Bethesda, MD 20824-0306

Every kid deserves to have a great summer...
Take a look, and you'll find just the right
opportunity for your child.

Big Train Summer Baseball Camps

- **Extended Day option**
- **Special Team Group Rates**
- **Advanced Development Camps**
- **NEW IN 2009! Big Train Pitching Camp**
- **Big Train Family Pass Bonus**

Big Train Advanced Development Camps

Three Sessions: June 22-26, June 29-July 3, July 20-24

Price: \$175
\$150 if group of 5 or more sign-up together
\$80 additional to attend basic camp in afternoon

Time: 9 a.m. to noon

Limited to first 25 to sign-up each week

Cabin John Regional Park Field #2

Cabin John Regional Park Field #2, the best youth baseball field in Montgomery County, will be the venue for the Big Train Advanced Development Player Camps. Big Train Manager Sal Colangelo has designed these camps for advanced training for young players with above-average skills. On Monday, Big Train players and coaches will lead the campers through a series of drills designed to improve skills and choose teams for the week's showcase games. Each day from Tuesday through Friday, camp will begin with one hour of skills training followed by a 7-inning showcase game on Field #2 complete with player introductions and between innings music. Each camper will receive a two-button Big Train Jersey and a written evaluation by the Big Train coaches. For an additional \$80, the participants in the Advanced Development Player Camps may attend the regular Big Train Camp in the afternoon until 3 p.m.

REFUND POLICY

A full refund will be given minus \$25 for an administrative fee to people who cancel their camp registration 30 days or more before the start of the camp. No refund will be given for cancellations less than thirty days before the start of the camp.

NEW! Big Train Summer Pitching Camps

Two Sessions
June 22-July 3 & July 13-July 24

NOTE: Big Train Pitching Camp will be held on Monday, Tuesday, Thursday and Friday during each two-week session

PRICE: \$300 for each two-week session
\$250 per player if group of 5 or more sign-up together

TIME: 9 a.m.-11 a.m.

Limited to first 25 to sign-up each session, ages 10+.

This summer, the Bethesda Big Train is excited to introduce a special, brand new camp: the Big Train Pitching Camp! The Big Train will be naming Bill Sizemore its new pitching coach in 2009 and Coach Sizemore will lead the organization's new summer pitching camp, a camp for players ages 10+.

Affordable pitching camps which provide young players with specialized training can be difficult to find. But with the best coaches in the business - and at just \$150 per week - the Big Train pitching camp provides highly specialized skill development at a very affordable price. This camp will run for 2 **two-week sessions**, the first from **June 22 to July 3** and the second from **July 13 to July 24**. During both sessions, camp will be on **Monday, Tuesday, Thursday, and Friday, and will run from 9:00 a.m. until 11:00 a.m.**

During the camp, 25 players will have the opportunity to receive one-on-one training and participate in pitching drills with Coach Bill Sizemore and the camp's additional staff of Big Train college pitchers. Campers - from ages 10 up through high school - will work for two hours each morning in the Povich Field outfield and Povich Field bullpens, building the pitching skills to get them to that next level.

Coach Bill Sizemore joins the Big Train having worked in professional baseball as both a pitching coach and a scout for the past 15 years. Coach Sizemore previously coached high school and junior college baseball, has a Master's Degree in Counseling, and currently works with professional pitchers in the off-season to help them get prepared for their spring seasons. The Big Train is excited to welcome Coach Sizemore in 2009 and thrilled that he will be leading our new pitching camp.



Big Train Summer Baseball Camp



6 weekly sessions beginning June 22

Price: \$225 per week
\$200 each if group of 5 or more sign-up together

Boys and girls ages 5-13

Time: 9 a.m.-3 p.m.

Meet at Shirley Povich Field

Camp Location

Shirley Povich Field at Cabin John Regional Park will be the headquarters for one of the finest learning experiences and most enjoyable weeks your child will spend this summer. Meet every morning at Shirley Povich Field, the best baseball facility in Montgomery County. Practices and games at well-manicured fields right next to the ballpark. Lunch in the Picnic Pavilion at Povich Field.

Extended Day Option

At the suggestion of many parents, the Big Train Summer Baseball Camp will provide an extended day option again this summer. For \$50 per week (\$25 per week will provide for mornings or afternoons only of the half-day baseball camp or before or after the regular camp), campers may sign-up for extended day care from 7:30-9 a.m. and 3-5:15 p.m. Care will be provided by experienced caregivers. During extended day care, campers will play board games, work on craft projects, and watch movies. Snacks will be provided in the afternoon. A \$1/minute late fee will be charged for each minute after 5:20 p.m.

Bethesda Big Train

Bethesda Big Train summer college baseball at Povich Field has become one of Montgomery County's most popular summertime activities. College stars come from across the country to play wooden bat baseball on summer nights. This is baseball at its most genuine at affordable prices right near home.

Big Train Summer Baseball Camp

At the Big Train Summer Baseball Camp, your child will be coached by Big Train Manager Sal Colangelo, the Big Train coaches, and the Big Train college stars. More than 55 Big Train alumni have been drafted by Major League teams to play professional ball.

All campers at the Big Train Summer Baseball Camp will receive excellent instruction in the fundamentals of the game as well as the opportunity to play in a live game each day. Each camper will receive an official Big Train Summer Baseball Camp t-shirt that will entitle the camper to free admission to all Big Train home games at Shirley Povich Field during the 2009 regular season.

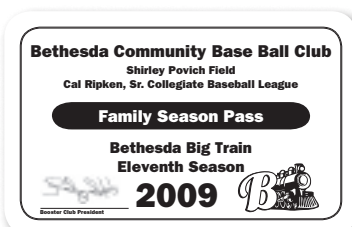
There will be something special every day at the Big Train Camp this summer:

- **Mondays:** Big Train mascot Homer will visit the campers during lunch and sign autographs.
- **Tuesdays:** Trivia contests with Big Train GM Jordan Henry during lunch with Big Train souvenirs as prizes.
- **Wednesdays:** Q & A with Big Train Manager Sal Colangelo during lunch.
- **Thursdays:** Autograph Day: Big Train players and coaches will autograph a Big Train Souvenir Program for your child.
- **Fridays:** Awards Day. Prizes for Best Dressed Campers, Camper of the Week, Most Improved Camper, Best Hitter, Best Fielder, and a Sportsmanship Award will be presented each week by Big Train Manager Sal Colangelo.

The administration and operation of the Big Train Summer Camp at Cabin John Regional Park are the sole responsibility of Bethesda Community Base Ball Club and not of the Maryland-National Capital Park & Planning Commission.



Bonus! Big Train Family Season Pass to all 25



Big Train home games at Shirley Povich Field in 2009 for \$62.50 to any family registering a child for the Big Train Summer Camp. **Value: \$125.**

Shirley Povich Field is the home of the Cal Ripken, Sr. Collegiate Baseball League Champion Bethesda Big Train and the Georgetown University Hoyas. Built in 1999, Povich Field is named in honor of the legendary *Washington Post* sportswriter who covered baseball from Walter Johnson to Cal Ripken, Jr.